

Romaccon Repair Clamp Type RS-C

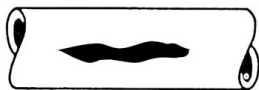
ROMACCON[®]

Romaccon stainless steel repair clamps Style RS-C are used for permanent repairs of damaged pipes

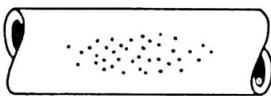
for water, gas and petrochemical fluids



Following types of damage can be repaired:



cracks / local damage



Pit holes

The RS-C Clamp is designed for pipes with DN 50 up to and including DN 300

RS-C clamps can be used as an economical alternative to RS-1 clamps, **but only for local damages.**

The clamps can be used to repair the following pipe types:

- Ductile Iron (DI)
- Cast Iron (CI)
- Steel (St.)
- Asbestos Cement (AC)
- PE coated steel
- PVC*
- GRP*
- PE*

* If pipe repair clamps are to be used on plastic pipes, please always contact Romaccon or a Romaccon distributor for more information regarding the application and restrictions on these pipe types.

Available sizes:

Romaccon RS-C clamps are available in several different working ranges for pipes of ND 50 up to including ND 300. Please consult our pricelist for more details on the working ranges.

Available lengths: 100 / 150 and 200 mm.

Pressure ratings:

Pressure ratings for water ** depend on the type of break or damage, pipe OD, medium etc.

In general, RS-C clamps can resist a working pressure of 16 bar for pipes up to ND 150 and 10 bar for pipes with ND > 150.

** Please contact Romaccon or your distributor for more information regarding pressures on gas pipes.

Romaccon Repair Clamp Type RS-C

Material specification:

- All metal parts: stainless steel AISI 304 or AISI316L.
- Metal parts have been deburred and are passivated to restore the corrosion resistance to its original state after the welding process.
- Single band (one section) half circle clamp with a working range between 4 and 11 mm, depending on the diameter. For an overview of all working ranges please see our pricelist.
- Standard certified rubber gaskets EPDM or NBR. The rubber is tapered and has a waffle pattern.
- Bridge plate is vulcanized into the rubber gasket
- U-shaped lifter bar.
- Bolts are PTFE (Teflon™) coated to prevent galling.
- Stainless steel washers.
- No loose parts that may get lost during installation.
- No special tools required: a simple wrench will do the job.
- Special tape is used to fix the rubber gasket to the stainless steel band. This tape is flexible and reinforced with glass fibre thread to withstand hot and humid conditions and guarantee a long storage capability.
- Under most circumstances the clamps can be installed without releasing the pressure on the pipe.
- The clamps are packed into strong double-rib cartons. For export overseas we use strong, seaworthy crates



The vulcanized bridge plate guarantees a leakproof sealing

Available rubber gaskets:

Romaccon clamps can be supplied with the following types of rubber:

EPDM -1	- potable water - waste water	max 55 degr. C.
EPDM -2	- potable water - waste water	max 140 degr. C.
NBR	- natural gas - potable water - waste water	max 80 degr. C.
Viton	- several chemicals pls contact Romaccon	pls. contact Romaccon

Our rubber gaskets are certified to European standards, such as ACS (France) and WRAS (UK).

Please contact us for a detailed list of current certifications.



Romaccon has been certified to ISO 9001:2000 by Tuv